

APPENDIX A – MINERAL RESOURCE ESTIMATE

Material	Class	Tonnes	Grade					Contained Metal				
			Ag	Au	Pb	Zn	AgEq	Ag	Au	Pb	Zn	AgEq
		(Mt)	(g/t)	(g/t)	(%)	(%)	(g/t)	(Moz)	(koz)	(Mlb)	(Mlb)	(Moz)
Oxide	Measured	21	30	0.08	0.23	0.25	49	21	51	109	117	33
	Indicated	42	24	0.06	0.24	0.31	46	33	85	224	288	62
	M&I	63	26	0.07	0.24	0.29	47	54	136	333	405	95
	Inferred	36	18	0.04	0.28	0.37	43	21	40	216	292	49
Sulphide	Measured	250	23	0.08	0.33	0.57	55	185	604	1,824	3,132	439
	Indicated	403	18	0.04	0.27	0.56	46	228	524	2,387	4,947	598
	M&I	653	20	0.05	0.29	0.56	49	413	1128	4,211	8,079	1037
	Inferred	109	13	0.02	0.21	0.38	33	46	82	510	923	118
TOTAL	Measured	271	24	0.08	0.32	0.55	55	206	655	1,933	3,249	472
	Indicated	445	19	0.04	0.27	0.54	46	261	609	2,611	5,235	660
	M&I	716	20	0.06	0.29	0.54	49	467	1,264	4,544	8,484	1,132
	Inferred	145	14	0.02	0.23	0.38	35	67	122	726	1,215	167

- Mineral Resource Estimates are inclusive of Mineral Reserves.
- The previous Cordero mineral resource estimate (MRE) was completed in November 2021 for Cordero by RedDot3D Inc. (RedDot). The current mineral resource estimate was calculated for Discovery Silver by RedDot, with final review by Richard Schwering of Hard Rock Consulting who is acting as this report's QP for mineral resources.
- Mineral resources that are not mineral reserves do not have demonstrated economic viability.
- The Resource is an in-pit resource containing a total of 860 Mt of Mineral Resource and 1,501 Mt of waste (below NSR\$7.25 cut off) for total tonnes of 2,361.Mt). The pit is constrained by a pit optimisation based on the following parameters:
 - Commodity prices: Ag - \$24.00/oz, Au - \$1,800/oz, Pb - \$1.10/lb, Zn - \$1.20/lb.
 - Metallurgical recoveries: Ag – 87%, Au – 18%, Pb – 89% and Zn – 88%. AgEq for sulphide mineralization and Ag – 59%, Au – 18%, Pb - 37% and Zn - 85% for oxide mineralization.
 - Operating costs:
 - Base mining costs of \$1.59/t for ore and \$1.59/t for waste were developed by AGP Mining Consultants Inc.
 - Processing costs of \$5.22/t for mill/flotation and G&A costs of \$0.86/t were developed by Ausenco Engineering Canada Inc.
 - Average pit slope assumption of 45°
- Sulphide and Oxide mineral resources are reported at a \$7.25/t NSR cut-off based on the approximate estimated processing and G&A cost for mineralization. NSR is defined as the net revenue from metal sales (taking into account metallurgical recoveries and payabilities) less treatment costs and refining charges.
- Individual metals are reported at 100% of in-situ grade.
- AgEq for sulphide mineral resources is calculated as $Ag + (Au \times 15.52) + (Pb \times 32.15) + (Zn \times 34.68)$; these factors are based on commodity prices of Ag - \$24.00/oz, Au - \$1,800/oz, Pb - \$1.10/lb, Zn - \$1.20/lb and assumed recoveries of Ag – 87%, Au – 18%, Pb – 89% and Zn – 88%. AgEq for oxide mineral resources is calculated as $Ag + (Au \times 22.88) + (Pb \times 19.71) + (Zn \times 49.39)$; this factor is based on commodity prices of Ag - \$24.00/oz and Au - \$1,800/oz and assumed recoveries of Ag – 59%, Au – 18%, Pb - 37% and Zn - 85%.
- There are no known factors or issues that materially affect the mineral resource and mineral reserve estimates other than normal risks faced by mining projects in Mexico in terms of legal, environmental, permitting, taxation, socio-economic, and political factors. Additional risk factors are listed in the "Cautionary Note Regarding Forward-Looking Statements" section in this news release
- The effective date of the Resource is January 18, 2023, and is based on drilling through end of May 2022. A full technical report will be prepared in accordance with NI 43-101 and will be filed on SEDAR within 45 days of this press release.

APPENDIX B – MINERAL RESERVE ESTIMATE

Material	Class	Tonnes	Grade				Contained Metal			
			Ag	Au	Pb	Zn	Ag	Au	Pb	Zn
		(Mt)	(g/t)	(g/t)	(%)	(%)	(Moz)	(Moz)	(Blb)	(Blb)
Oxide	Proven	8	34	0.08	0.28	0.29	9	0.02	0.05	0.05
	Probable	11	28	0.07	0.28	0.36	10	0.02	0.07	0.09
	Total P&P	19	31	0.07	0.28	0.33	19	0.04	0.12	0.14
Sulphide	Proven	156	29	0.10	0.46	0.69	144	0.50	1.57	2.38
	Probable	128	25	0.06	0.44	0.76	104	0.25	1.23	2.14
	Total P&P	284	27	0.08	0.45	0.72	248	0.75	2.79	4.52
TOTAL	Proven	164	29	0.10	0.45	0.67	153	0.52	1.63	2.42
	Probable	138	26	0.06	0.43	0.73	114	0.27	1.30	2.22
	Total P&P	302	27	0.08	0.44	0.70	266	0.79	2.94	4.65

Supporting Technical Disclosure for Reserves

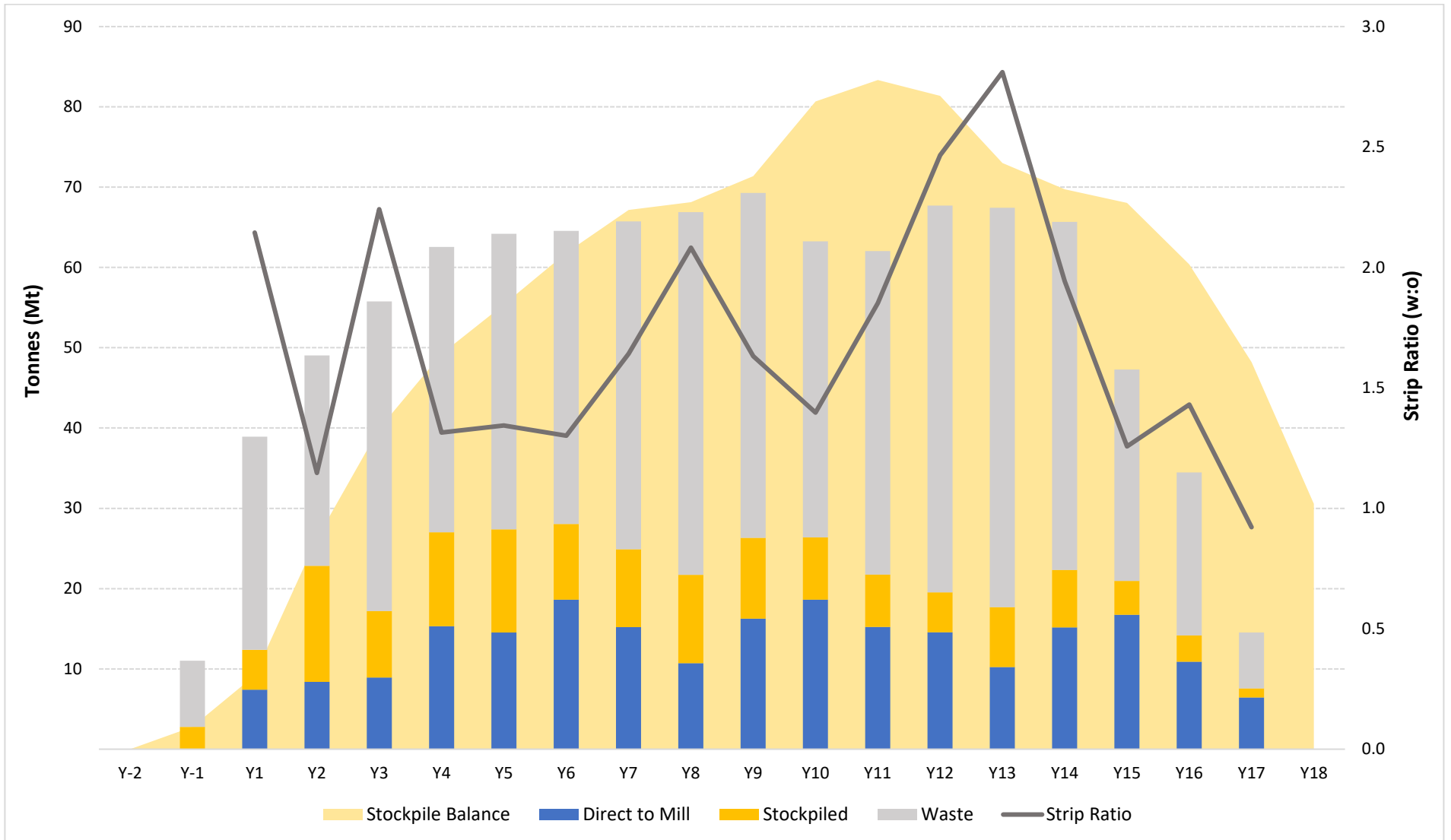
- This mineral reserve estimate has an effective date of January 18, 2023, and is based on the mineral resource estimate, for Discovery Silver by Richard Schwering of Hard Rock Consulting of the same date.
- The Mineral Reserve estimate was completed under the supervision of Manuel Jessen, P.Eng. of AGP, who is a Qualified Person as defined under NI 43-101.
- Mineral Reserves are stated within the final pit designs based on a US\$20.00/oz silver price, US\$1,600/oz gold price, US\$0.95/lb lead price and US\$1.20/lb zinc price.
- An NSR cut-off of US\$10.00/t was used to define sulfides reserves. The life-of-mine mining cost averaged US\$1.60/t mined, preliminary processing costs were US\$5.22/t ore and G&A was US\$0.89/t ore placed. The metallurgical recoveries were varied according to head grade and concentrate grades. Lead concentrate recoveries were approximately 82.5%, 12.6% and 91.8% for silver, gold, and lead respectively. Zinc concentrate recoveries were approximately 10.0%, 9.5% and 77.8% for silver, gold, and zinc respectively.

APPENDIX C: AFTER-TAX NPV / IRR / PAYBACK SENSITIVITIES

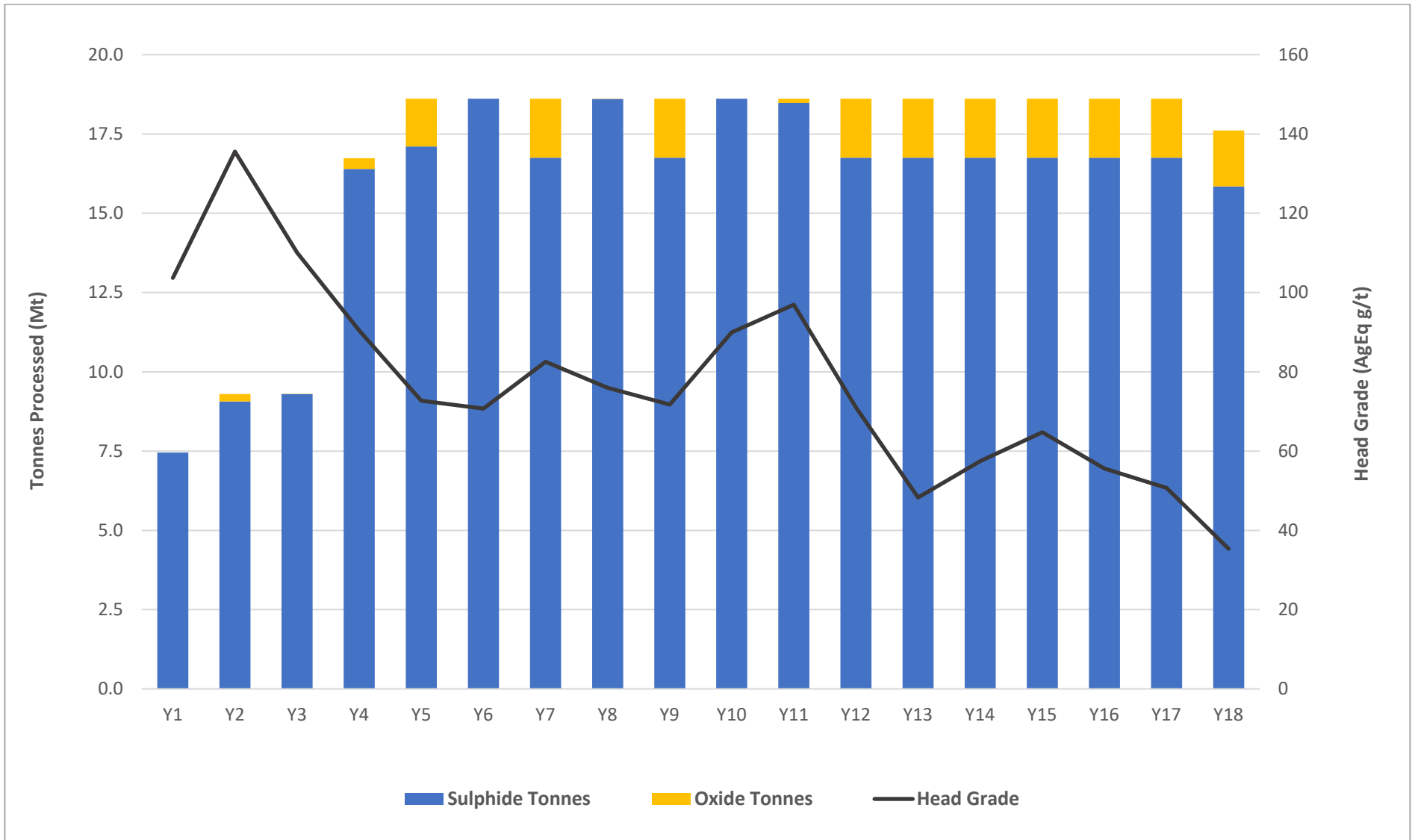
Sensitivity of the Project's NPV, IRR and payback at different Ag and Zn price assumptions is outlined in the table below. For these sensitivities the Au and Pb prices have been fixed at \$1,600/oz and \$1.00/lb respectively. The Base Case scenario for the PEA is highlighted in grey below and assumes Ag - \$22.00/oz, Au - \$1,600/oz, Pb - \$1.00/lb and Zn - \$1.20/lb.

		Ag (\$/oz)														
		\$18.00			\$20.00			\$22.00			\$25.00			\$30.00		
		NPV (5%) <i>(US\$M)</i>	IRR <i>(%)</i>	Payback <i>(yrs)</i>	NPV (5%) <i>(US\$M)</i>	IRR <i>(%)</i>	Payback <i>(yrs)</i>	NPV (5%) <i>(US\$M)</i>	IRR <i>(%)</i>	Payback <i>(yrs)</i>	NPV (5%) <i>(US\$M)</i>	IRR <i>(%)</i>	Payback <i>(yrs)</i>	NPV (5%) <i>(US\$M)</i>	IRR <i>(%)</i>	Payback <i>(yrs)</i>
Zn (\$/lb)	\$1.05	638	19.3%	5.5	798	22.3%	5.0	958	25.2%	4.5	1,198	29.3%	3.9	1,599	36.0%	3.3
	\$1.10	703	20.3%	5.4	863	23.3%	4.8	1,023	26.1%	4.4	1,263	30.2%	3.9	1,664	36.8%	3.2
	\$1.20	832	22.4%	5.1	992	25.2%	4.6	1,153	28.0%	4.2	1,393	32.0%	3.7	1,794	38.4%	3.1
	\$1.30	962	24.3%	4.8	1,122	27.1%	4.3	1,282	29.7%	4.0	1,523	33.7%	3.6	1,923	40.0%	3.0
	\$1.45	1,156	27.1%	4.4	1,317	29.7%	4.1	1,477	32.3%	3.7	1,717	36.1%	3.4	2,118	42.3%	2.2

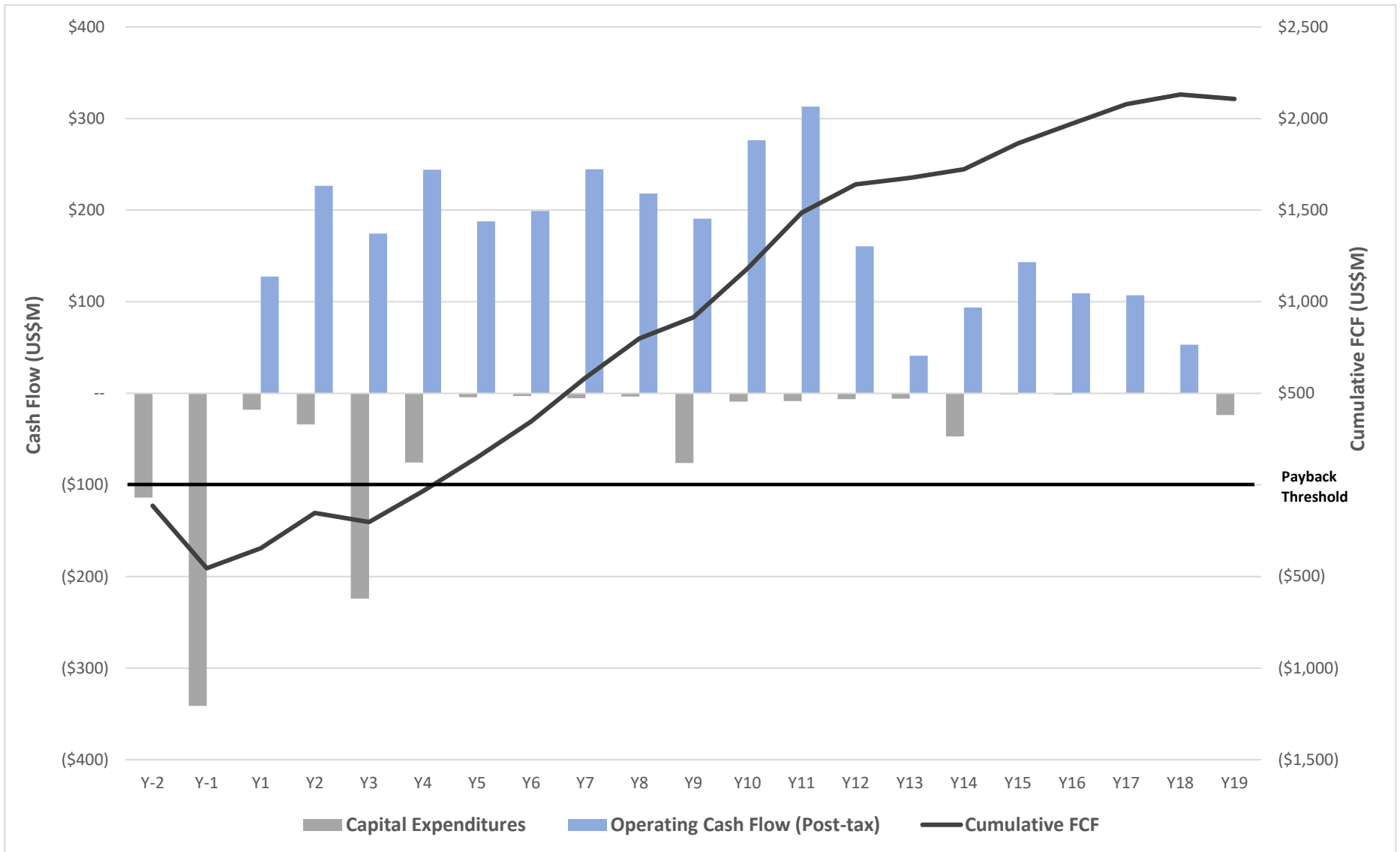
APPENDIX D - LOM MINE PLAN SUMMARY



APPENDIX E - LOM PROCESS THROUGHPUT SUMMARY

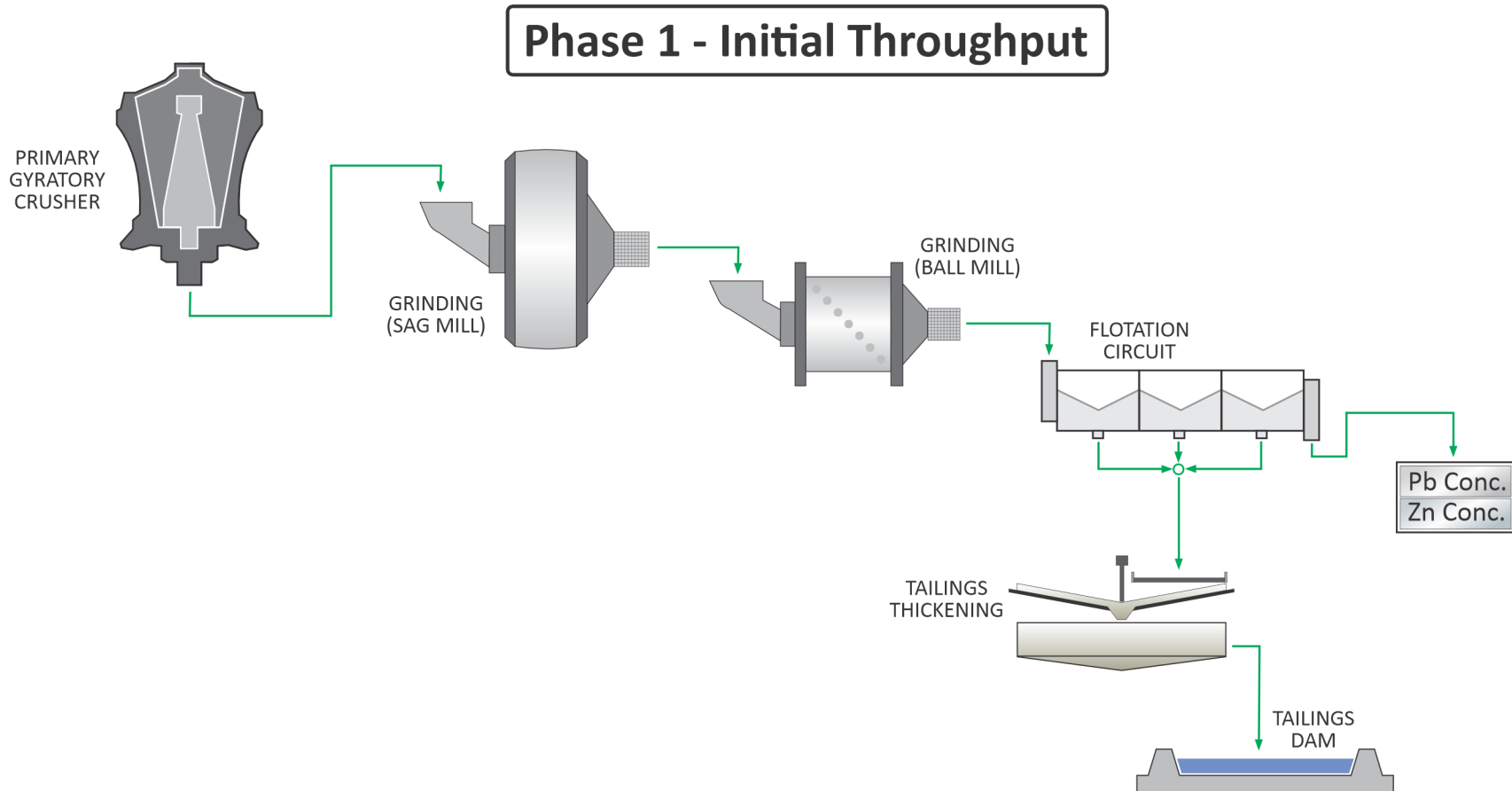


APPENDIX F – AFTER-TAX FREE CASH FLOW

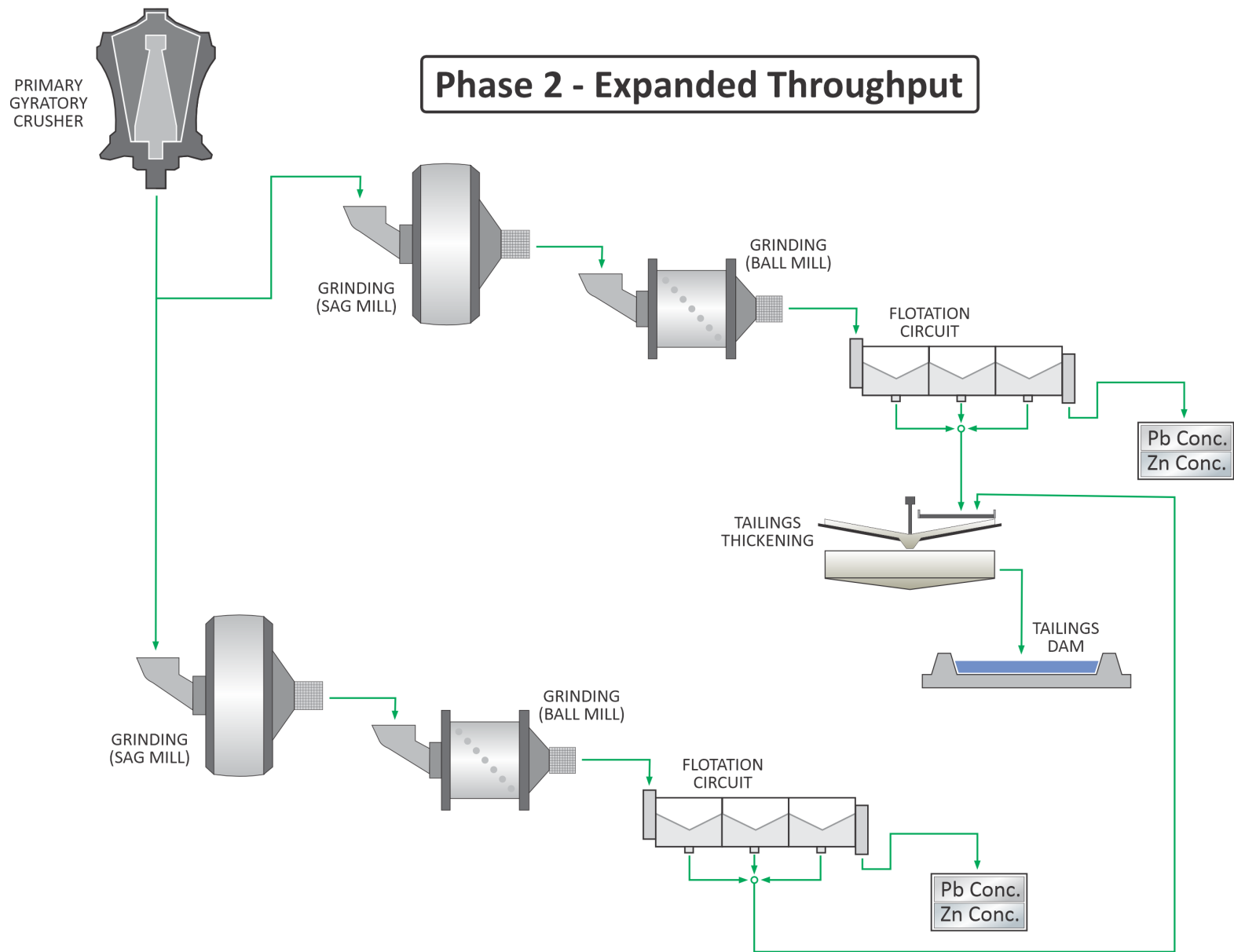


APPENDIX G - SIMPLIFIED PROCESS FLOWSHEETS

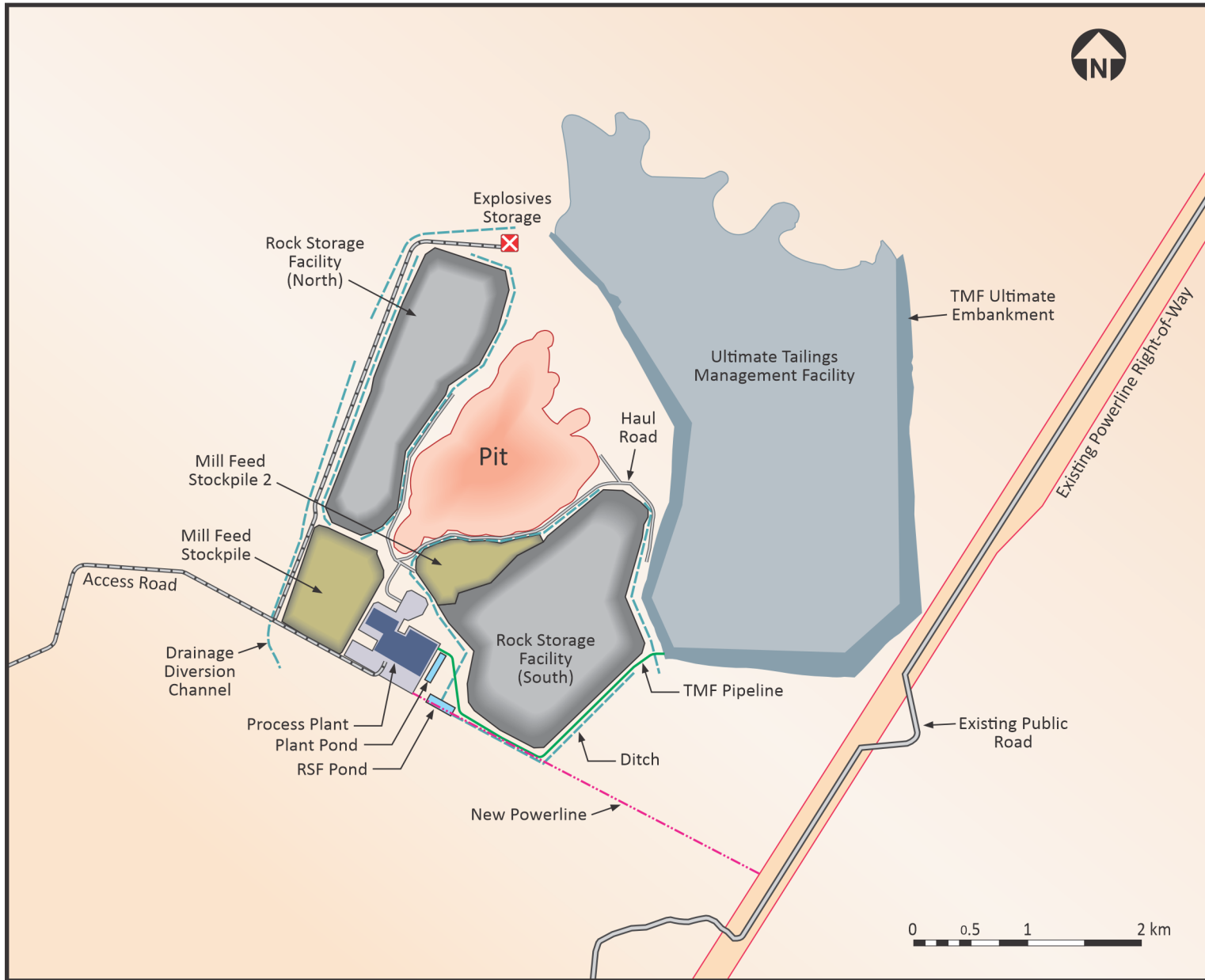
PHASE 1 (25,500 tpd nameplate capacity):



PHASE 2 (51,000 tpd nameplate capacity):



APPENDIX I - SITE LAYOUT:



APPENDIX J – PRODUCTION & CASH FLOW SCHEDULE:

	Units	Total/Avg	Y-2	Y-1	Y1	Y2	Y3	Y4	Y5	Y6	Y7	Y8	Y9	Y10	Y11	Y12	Y13	Y14	Y15	Y16	Y17	Y18	Y19
MINING																							
Mineralized Material Mined*	mt	333	--	3	14	26	23	26	25	25	24	20	22	28	21	17	10	15	17	11	6	--	--
Waste Mined	mt	609	--	8	27	26	39	36	37	37	41	45	43	37	40	48	50	43	26	20	7	--	--
Total Material Mined	mt	942	--	11	40	53	62	62	62	62	65	65	65	65	62	65	60	59	43	31	13	--	--
Mining Rate	ktpd	143	--	30	111	144	169	169	169	169	178	178	178	178	169	178	164	161	119	86	37	--	--
Strip Ratio**	w:o	2.1	--	3.0	1.9	1.0	1.7	1.4	1.5	1.5	1.7	2.3	2.0	1.3	1.9	2.9	4.8	2.8	1.6	1.9	1.1	--	--
<i>*Mineralized material mined includes 30Mt of above cutoff oxides that are not processed. For ore processed (ie: reserves), see "Processing" section below</i>																							
<i>**Strip ratio is that of processed mineralized material (ie: ore in reserves) and excludes the unprocessed 30Mt of above cutoff grade oxides left on stockpiles at the end of production (ie: treated as waste in SR calculation)</i>																							
PROCESSING																							
Oxides – Mill Feed:																							
Ore Tonnes	mt	19	--	--	--	0.2	0.0	0.3	1.5	--	1.9	0.0	1.9	--	0.1	1.9	1.9	1.9	1.9	1.9	1.9	1.8	--
Ore Grades:																							
Ag	g/t	31	--	--	--	61	35	41	42	--	31	44	29	--	36	31	28	28	28	28	28	28	--
Au	g/t	0.07	--	--	--	0.07	0.09	0.06	0.05	--	0.07	0.03	0.08	--	0.08	0.06	0.08	0.08	0.08	0.08	0.08	0.08	--
Pb	%	0.28%	--	--	--	0.76%	1.29%	0.36%	0.30%	--	0.29%	0.69%	0.24%	--	0.49%	0.41%	0.25%	0.25%	0.25%	0.25%	0.25%	0.25%	--
Zn	%	0.33%	--	--	--	1.07%	1.29%	0.27%	0.25%	--	0.29%	0.35%	0.29%	--	0.46%	0.54%	0.30%	0.30%	0.30%	0.30%	0.30%	0.30%	--
AgEq	g/t	57	--	--	--	130	130	67	65	--	56	81	53	--	74	67	53	53	53	53	53	53	--
Sulphides – Mill Feed:																							
Ore Tonnes	mt	284	--	--	7	9	9	16	17	19	17	19	17	19	18	17	17	17	17	17	17	16	--
Mill Head Grade:																							
Ag	g/t	27	--	--	44	51	50	36	30	27	31	27	28	30	31	24	17	21	24	19	18	12	--
Au	g/t	0.08	--	--	0.22	0.28	0.12	0.21	0.09	0.06	0.07	0.08	0.05	0.09	0.07	0.05	0.04	0.04	0.06	0.05	0.05	0.05	--
Pb	%	0.45%	--	--	0.63%	0.82%	0.58%	0.56%	0.38%	0.41%	0.50%	0.45%	0.45%	0.55%	0.63%	0.49%	0.29%	0.35%	0.40%	0.33%	0.31%	0.19%	--
Zn	%	0.72%	--	--	0.63%	1.03%	0.88%	0.60%	0.68%	0.72%	0.90%	0.79%	0.74%	0.97%	1.13%	0.76%	0.48%	0.62%	0.69%	0.62%	0.53%	0.32%	--
AgEq	g/t	74	--	--	104	136	110	91	73	71	85	76	74	90	97	71	48	58	66	56	51	33	--
TOTAL ORE - Mill Feed:																							
Ore Tonnes	mt	302	--	--	7	9	9	17	19	19	19	19	19	19	19	19	19	19	19	19	19	18	--
Mill Head Grade:																							
Ag	g/t	27	--	--	44	52	50	36	31	27	31	27	28	30	31	25	19	22	24	20	19	14	--
Au	g/t	0.08	--	--	0.22	0.27	0.12	0.20	0.09	0.06	0.07	0.08	0.05	0.09	0.07	0.05	0.05	0.04	0.06	0.05	0.05	0.05	--
Pb	%	0.44%	--	--	0.63%	0.82%	0.58%	0.56%	0.37%	0.41%	0.48%	0.45%	0.43%	0.55%	0.63%	0.48%	0.29%	0.34%	0.38%	0.32%	0.31%	0.19%	--
Zn	%	0.70%	--	--	0.63%	1.03%	0.88%	0.60%	0.64%	0.72%	0.84%	0.79%	0.70%	0.97%	1.12%	0.74%	0.47%	0.59%	0.65%	0.59%	0.50%	0.32%	--
AgEq	g/t	73	--	--	104	136	110	90	73	71	83	76	72	90	97	71	48	57	65	56	51	35	--
Lead/Silver Conc. – Recovery:																							
Ag	%	71%	--	--	78%	77%	77%	75%	65%	74%	68%	75%	67%	77%	77%	65%	61%	64%	65%	63%	62%	54%	--
Au	%	13%	--	--	13%	13%	13%	13%	13%	13%	13%	13%	13%	13%	13%	13%	13%	13%	13%	13%	13%	13%	--
Pb	%	86%	--	--	90%	90%	89%	88%	84%	87%	85%	88%	85%	89%	89%	84%	82%	83%	84%	83%	82%	78%	--
Zinc Conc. – Recovery:																							
Ag	%	17%	--	--	12%	12%	13%	14%	18%	14%	17%	14%	17%	13%	13%	18%	20%	19%	18%	19%	20%	23%	--
Au	%	10%	--	--	10%	10%	10%	10%	10%	10%	10%	10%	10%	10%	10%	10%	10%	10%	10%	10%	10%	10%	--
Zn	%	85%	--	--	84%	88%	86%	83%	84%	85%	87%	85%	85%	87%	88%	85%	82%	84%	85%	84%	83%	79%	--

	Units	Total/Avg	Y-2	Y-1	Y1	Y2	Y3	Y4	Y5	Y6	Y7	Y8	Y9	Y10	Y11	Y12	Y13	Y14	Y15	Y16	Y17	Y18	Y19
PRODUCTION PROFILE																							
METAL PRODUCED:																							
Ag – Ag/Pb Concentrate	moz	186	--	--	8	12	12	14	12	12	13	12	11	14	14	10	7	8	10	7	7	4	--
Au – Ag/Pb Concentrate	koz	100	--	--	7	10	5	14	7	5	5	6	4	6	5	4	4	3	4	4	4	4	--
Pb – Ag/Pb Concentrate	mlbs	2,513	--	--	93	151	105	183	129	147	167	163	151	203	229	167	96	118	133	110	104	64	--
AgEq – Ag/Pb Concentrate	moz	326	--	--	13	20	17	24	19	20	22	21	20	25	27	19	12	15	17	14	13	8	--
Ag – Zn Concentrate	moz	43	--	--	1	2	2	3	3	2	3	2	3	2	2	3	2	2	3	2	2	2	--
Au – Zn Concentrate	koz	75	--	--	5	8	3	10	5	4	4	5	3	5	4	3	3	2	3	3	3	3	--
Zn – Zn Concentrate	mlbs	3,986	--	--	87	185	156	185	223	249	297	277	244	348	405	260	161	203	225	203	174	105	--
AgEq – Zn Concentrate	moz	265	--	--	6	13	11	13	16	16	20	18	16	22	25	17	11	14	15	14	12	8	--
Ag – Total	moz	229	--	--	10	14	13	17	15	14	16	14	14	16	16	12	9	11	12	10	9	6	--
Au – Total	koz	175	--	--	12	18	8	24	12	8	9	11	7	11	9	6	6	5	8	7	7	6	--
Pb – Total	mlbs	2,513	--	--	93	151	105	183	129	147	167	163	151	203	229	167	96	118	133	110	104	64	--
Zn – Total	mlbs	4,314	--	--	92	197	168	196	242	271	322	301	264	377	440	280	175	221	244	221	188	114	--
AgEq – Total Metal Produced	moz	591	--	--	20	33	28	38	35	36	42	39	36	47	52	36	23	29	32	27	25	16	--
METAL PAYABLE:																							
Ag – Ag/Pb Concentrate	moz	177	--	--	8	11	11	14	11	11	12	11	11	13	13	9	6	8	9	7	7	4	--
Au – Ag/Pb Concentrate	koz	47	--	--	4	7	2	9	3	1	1	2	4	1	5	3	0	3	0	1	1	1	--
Pb – Ag/Pb Concentrate	mlbs	2,368	--	--	89	143	100	173	121	138	158	154	143	192	217	157	90	110	125	103	97	59	--
AgEq – Ag/Pb Concentrate	moz	288	--	--	12	18	16	22	17	18	19	18	18	22	24	17	10	13	15	12	11	7	--
Ag – Zn Concentrate	moz	22	--	--	1	1	1	1	2	1	2	1	2	1	1	1	1	1	1	1	1	1	--
Au – Zn Concentrate	koz	7	--	--	2	2	--	4	--	--	--	--	--	--	--	--	--	--	--	--	--	--	--
Zn – Zn Concentrate	mlbs	3,360	--	--	73	157	132	155	187	210	251	233	205	294	344	219	135	171	189	170	146	88	--
AgEq – Zn Concentrate	moz	206	--	--	5	10	8	10	12	13	15	14	13	17	20	13	9	11	12	10	9	6	--
Ag – Total	moz	199	--	--	9	12	12	15	13	12	14	12	12	14	14	11	8	9	10	8	8	5	--
Au – Total	koz	54	--	--	6	8	2	13	3	1	1	2	4	1	5	3	0	3	0	1	1	1	--
Pb – Total	mlbs	2,368	--	--	89	143	100	173	121	138	158	154	143	192	217	157	90	110	125	103	97	59	--
Zn – Total	mlbs	3,360	--	--	73	157	132	155	187	210	251	233	205	294	344	219	135	171	189	170	146	88	--
AgEq – Total Metal Payable	moz	494	--	--	17	28	24	32	29	30	35	32	30	39	43	30	19	24	26	22	20	13	--

	Units	Total/Avg	Y-2	Y-1	Y1	Y2	Y3	Y4	Y5	Y6	Y7	Y8	Y9	Y10	Y11	Y12	Y13	Y14	Y15	Y16	Y17	Y18	Y19
REVENUE																							
OXIDES + SULPHIDES:																							
Ag Revenue	US\$mm	\$4,387	--	--	\$190	\$272	\$265	\$335	\$291	\$271	\$301	\$271	\$275	\$310	\$315	\$232	\$168	\$202	\$231	\$180	\$170	\$110	--
Au Revenue	US\$mm	\$87	--	--	\$10	\$14	\$3	\$20	\$4	\$1	\$1	\$2	\$6	\$2	\$8	\$6	\$1	\$5	\$1	\$1	\$1	\$2	--
Pb Revenue	US\$mm	\$2,368	--	--	\$89	\$143	\$100	\$173	\$121	\$138	\$158	\$154	\$143	\$192	\$217	\$157	\$90	\$110	\$125	\$103	\$97	\$59	--
Zn Revenue	US\$mm	\$4,032	--	--	\$88	\$188	\$158	\$186	\$225	\$252	\$301	\$280	\$246	\$353	\$412	\$263	\$163	\$205	\$227	\$204	\$175	\$106	--
Gross Revenue	US\$mm	\$10,874	--	--	\$376	\$617	\$526	\$715	\$641	\$662	\$761	\$707	\$669	\$857	\$952	\$658	\$421	\$522	\$583	\$488	\$443	\$277	--
Treatment & Refining Charges	US\$mm	\$1,243	--	--	\$36	\$62	\$53	\$71	\$71	\$77	\$88	\$83	\$76	\$101	\$113	\$79	\$51	\$63	\$69	\$61	\$54	\$34	--
Total Penalties	US\$mm	\$58	--	--	\$2	\$3	\$2	\$3	\$3	\$3	\$4	\$4	\$3	\$5	\$6	\$4	\$2	\$3	\$3	\$3	\$2	\$1	--
Net Revenue - Total	US\$mm	\$9,572	--	--	\$339	\$551	\$471	\$641	\$567	\$581	\$669	\$620	\$590	\$751	\$833	\$575	\$367	\$457	\$510	\$424	\$386	\$242	--
OPERATING COSTS																							
UNIT COSTS:																							
Mine (Incl. Rehandling)	US\$/t Moved	\$2.45	--	--	\$2.44	\$2.31	\$2.31	\$2.39	\$2.42	\$2.30	\$2.34	\$2.26	\$2.18	\$2.35	\$2.48	\$2.32	\$2.44	\$2.56	\$2.84	\$3.04	\$4.45	--	--
Processing	US\$/t Processed	\$6.38	--	--	\$6.56	\$6.46	\$6.46	\$6.38	\$6.36	\$6.36	\$6.36	\$6.36	\$6.36	\$6.36	\$6.48	\$6.36	\$6.36	\$6.36	\$6.36	\$6.36	\$6.36	\$6.37	--
Site G&A Costs	US\$/t Processed	\$0.62	--	--	\$1.32	\$1.06	\$1.06	\$0.63	\$0.57	\$0.57	\$0.57	\$0.57	\$0.57	\$0.57	\$0.57	\$0.57	\$0.57	\$0.57	\$0.57	\$0.57	\$0.57	\$0.60	--
OPERATING COSTS INCURRED:																							
Mine (Incl. Rehandling)	US\$mm	\$2,286	--	--	\$98	\$121	\$142	\$147	\$149	\$141	\$151	\$146	\$141	\$152	\$153	\$150	\$146	\$150	\$123	\$95	\$60	\$18	--
Processing	US\$mm	\$1,929	--	--	\$49	\$60	\$60	\$107	\$118	\$118	\$118	\$118	\$118	\$118	\$121	\$118	\$118	\$118	\$118	\$118	\$118	\$112	--
Site G&A Costs	US\$mm	\$188	--	--	\$10	\$10	\$10	\$11	\$11	\$11	\$11	\$11	\$11	\$11	\$11	\$11	\$11	\$11	\$11	\$11	\$11	\$11	--
Total Site Operating Costs	US\$mm	\$4,402	--	--	\$157	\$191	\$212	\$264	\$278	\$270	\$280	\$275	\$270	\$281	\$284	\$279	\$275	\$279	\$252	\$224	\$189	\$140	--
NSR - Government	US\$mm	\$21	--	--	\$1	\$1	\$1	\$2	\$1	\$1	\$1	\$1	\$1	\$1	\$2	\$1	\$1	\$1	\$1	\$1	\$1	\$1	--
Concentrate Transport	US\$mm	\$816	--	--	\$22	\$39	\$31	\$45	\$46	\$50	\$57	\$55	\$50	\$66	\$75	\$54	\$35	\$42	\$46	\$41	\$37	\$24	--
Total Operating Costs	US\$mm	\$5,239	--	--	\$180	\$232	\$245	\$311	\$325	\$322	\$339	\$331	\$321	\$349	\$360	\$334	\$311	\$322	\$299	\$266	\$227	\$165	--
CASH COSTS:																							
Co-Product Basis:																							
Operating Cash Costs	US\$/oz AgEq	\$8.91	--	--	\$9.20	\$6.83	\$8.86	\$8.14	\$9.53	\$8.99	\$8.10	\$8.57	\$8.88	\$7.22	\$6.56	\$9.34	\$14.39	\$11.76	\$9.51	\$10.08	\$9.37	\$11.13	--
Total Cash Costs	US\$/oz AgEq	\$13.23	--	--	\$12.70	\$10.60	\$12.55	\$11.86	\$13.70	\$13.38	\$12.48	\$13.02	\$13.19	\$11.68	\$11.08	\$13.93	\$19.05	\$16.34	\$14.03	\$14.86	\$14.08	\$15.90	--
All-in Sustaining Costs	US\$/oz AgEq	\$13.62	--	--	\$12.89	\$11.80	\$12.86	\$11.97	\$13.84	\$13.48	\$12.63	\$13.13	\$14.67	\$11.91	\$11.27	\$14.15	\$19.36	\$18.32	\$14.08	\$14.92	\$14.11	\$15.96	--

